

# **Knox County Health Department**

## **Disease Outbreak Response Plan Overview**

# BASIC PLAN

## **I. Lead Agency**

The Knox County Health Department, through the Knox County Mayor's Office, is the lead agency responsible for providing public health planning for smallpox vaccination, outbreaks and other biological and chemical events for Knox County.

## **II. Support Agencies**

Tennessee Emergency Management Agency (TEMA)

Knoxville Emergency Management Agency (KEMA)

City Mayor's Office

County Mayor's Office

Knox County School System

Knox County Sheriff's Department

Knoxville City Police Departments

Tennessee State Guard

Knox County School Bus Association

City/County Government – Agencies

Knox County Area Hospitals

Local Ham Radio Association (METERS)

American Red Cross

East Tennessee Mental Health Association

## **III. Introduction**

### **A. Purpose**

The purpose of this plan is to provide a functional approach to a post-event disease outbreak and other biological or chemical declaration. This plan will

prioritize and provide guidance and coordination of resources needed to provide vaccination or prophylaxis treatment to the residents of Knox County. This plan will never be “formalized” but will have continued updates to include additional training, retraining, review of personal, and review of government/private sector responsibilities.

## **B. Scope**

This plan addresses the Knox County Health Department’s operational guidelines to ensure support for the eight (8) points of dispensing (PODS) These guidelines are set forth by standard operation guidelines (SOG), which are included in a separate section of this document. Specifically, this plan addresses the inter-relationship between the organizations with roles in the event of a biological/chemical event declaration. These organizations would include various departments and divisions of county government, city government, and the private sector. This plan will also address procedures for establishing a continuous program for maintaining and updating this plan and supporting plans, and the evaluation of the adequacy for the intended purpose(s).

## **C. Response Framework**

This plan would be implemented upon notification to the Knox County Health Department Director and/or Knox County Health Department Public Health Officer and/or the Tennessee Commissioner of Public Health that an event has occurred. The implementation would be in consultation with the Governor,

Tennessee Emergency Management Agency (TEMA), Tennessee Department of Health (TDH), and the Centers of Disease Control (CDC).

#### **IV. Policies**

The early identification and investigation of a possible biological/chemical event or other outbreaks is critical to a successful response. The identification would be made utilizing both epidemiological and laboratory methods. Syndromic surveillance systems monitored by the Knox County Health Department will aid in early identification of a possible outbreak/event within the region.

##### **A. Situation and Assumption**

###### **A. Situation**

Knox County is situated in the eastern portion of Tennessee. There are two cities in the county, Knoxville and Farragut. The 2000 census, with a 3% increase to compensate for possible growth, indicates a population of 393,493 for the county.

Knox County is home to University of Tennessee football, where on any given Saturday during the fall football season, 100,000 plus fans fill the stadium, along with numerous mass gathering events during the year.

Knox County is located within twenty-five minutes of a Federal Department of Energy (Y-12 Plant) which manufactures/stores sensitive explosive weapons.

## **B. Planning Assumptions**

Although the probability of a events involving biological/chemicals agents in Knox County appears to be moderate, it is critical that the Knox County Health Department and other supporting agencies be prepared to implement rapid outbreak containment measures for such an event.

Coordination and integration with county, regional, state and federal-level sources are critical to protect the life and health of Knox County residents. Such emergencies or events include:

- Natural or man made disasters and public health/medical emergencies
- Terrorist threats or events using Chemical, Biological, Radiological or Explosive devices, otherwise known as “weapons of mass destruction” (WMD)
- Disease outbreaks and Pandemics (e.g. Influenza)
- Animal health emergencies (e.g. Foot and Mouth Disease, Bovine Spongiform Encephalopathy, etc.); or
- Any other circumstance that creates an actual or potential public health or medical emergency where local, state, or federal assistance may be necessary.

A significant public emergency may impair routine medical and healthcare services. Hospitals, nursing homes, ambulatory care canters, pharmacies and other facilities that are undamaged and in operation may become overwhelmed.

Critical and/or long-term healthcare patients in facilities that have been damaged will have to be moved to alternate locations.

Supplies of medicines and treatments may be in short supply due to damage or destruction of normal supply locations, general shortages, and damage or disruption of transportation systems within the disaster area.

Facilities utilized for health care and/or special needs purposes may be severely damaged or rendered partially or fully unusable due to lack of utilities (power, water, or sewer) or to staff shortages as a result of personal injuries, and/or damage or disruption of communications and/or transportation systems.

A major medical and environmental emergency resulting from “ weapons of mass destruction” (WMD) could produce a large concentration of specialized injuries and problems that could overwhelm local public health and medical care systems.

## **B. Concept of Operation (CONOPS)**

### **A. General**

It is the responsibility of the Knox County Health Department to implement points of dispensing planning for Knox County and to protect life in the event of a large-scale disease outbreak and/or biological/chemical event. This plan is based on the concepts that the emergency functions of various groups—government and non-government—will be called upon, and that daily functions, which do not contribute directly to the emergency operations, may be suspended for the duration of points of dispensing operation. The execution of this plan will come about in two ways:

(1.) A “national or state emergency” declared by the President or the Governor of Tennessee for all metros and regional Health Departments to initiate their respective plans in the event of a bioterrorism event or probable outbreak anywhere in the country, or (2.) a surveillance event during which local EMS, hospital emergency rooms, Knox County school system, or private physician offices may request assistance from the Knox County Health Department in diagnosing a possible smallpox case, or outbreak.

The Knox County Health Department Public Health Officer/or designee, or communicable disease section will notify the state epidemiologist with the Tennessee Department of Health, and the Public Health Investigation Team (PHIT) from the Knox County Health Department and the East Tennessee Regional Health Office.

The Public Health Investigation Team will respond to a possible or confirmed case of smallpox, or possible outbreak to gather clinical information, begin epidemiological investigation, vaccinate exposed persons (ring vaccinations), and implement quarantine procedures, if needed. If the situation warrants, the epidemiology staff from the CEDS division Tennessee Department of Health will be transported to the location to assist. Digital pictures and laboratory samples will be sent to the Centers for Disease Control in Atlanta for confirmation. If a smallpox case, or outbreak is confirmed, the Knox County Health Department Director and/or Public Health Officer will notify the Emergency Response Coordinator, whereupon, the Knox County Health Department Emergency Response Plan (ERP) will be implemented.

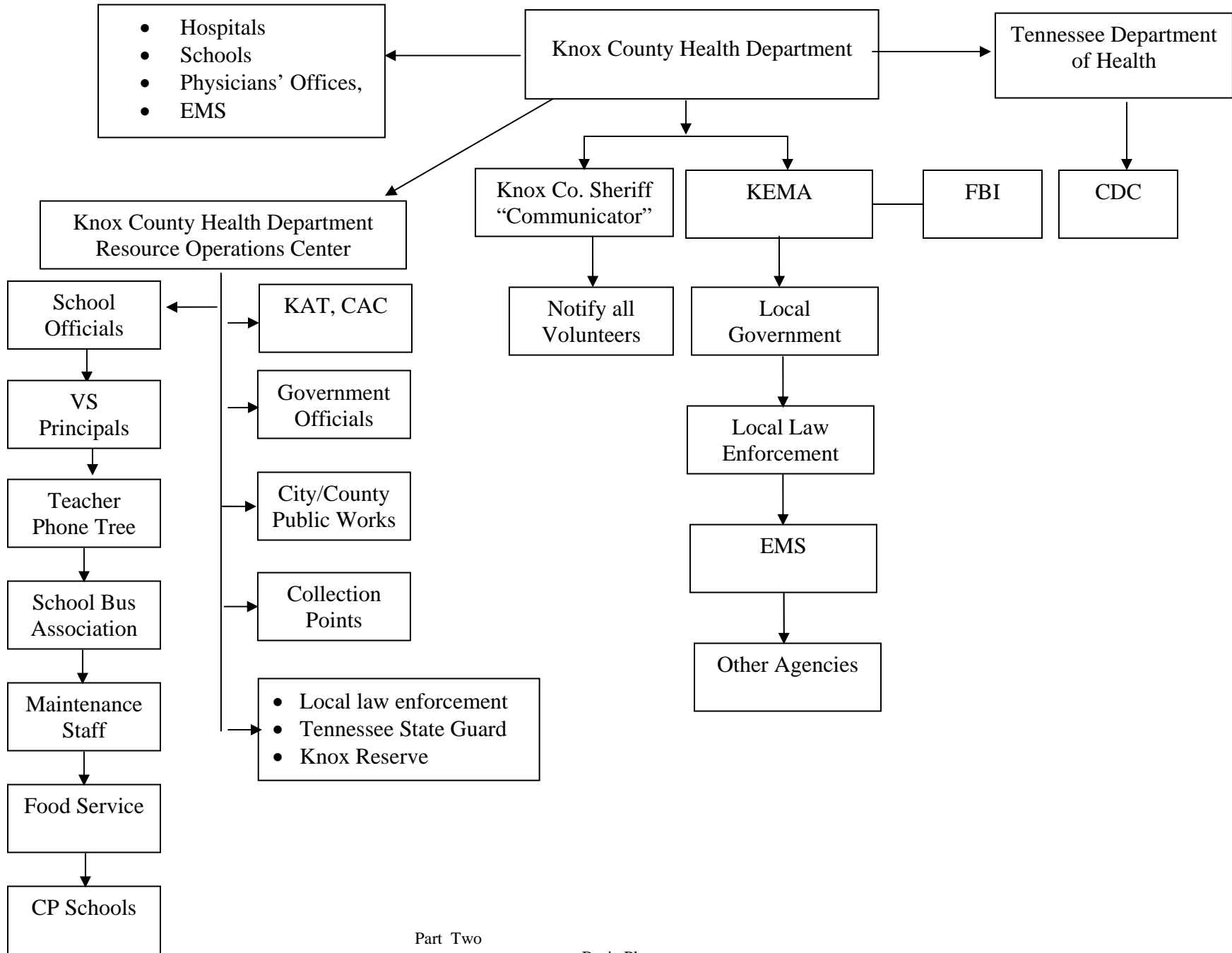
The Tennessee Department of Health (TDH), Communicable and Environmental Disease Services (CEDS), is the state agency responsible for providing public health planning for smallpox, outbreaks, or biological/ chemical events. The Tennessee Department of Health has the Tennessee Health Alert Network (THAN) to notify affected personnel for metro/regional health departments.

Upon notification from THAN, the Knox County Health Department Director, or Public Health Officer, or Emergency Response Coordinator will activate the resource operations center (KROC) and notify the all supporting agencies, both public and private utilizing KCHD “Phone-Tree” Alert Notification System.

The Knox County Health Department will establish a resource operations center (KROC) located in the community room, 140 Dameron Ave. The (KROC) will function as a resource center for the health department. There will also be public service announcements on local channels with prearranged public service announcements for volunteers to report to their assigned clinics. (These will be designed by the media sub-committee working on the Knox County Health Department, Emergency Response Plan).

**NOTIFICATION LIST**

Hospitals, schools, physician offices, or EMS should follow this notification list in the event of local outbreak of smallpox is detected by surveillance measures after the Knox County Health Department Public Health Investigation Team, along with state resources have clear assurance.



## **B. Organization and Responsibility**

The Tennessee Department of Health Bureau of Health Services, Communicable and Environmental Disease Services has directed the Knox County Health Department, according to population figures, to establish 8 Points of dispensing within the county. Knox County schools have been identified for use because of requirements set forth by CDC and the Tennessee Department of Health to have designated areas for various services to provide for the population. The Knox County Health Department has developed our response plan on the assumption that if a “national or state emergency” were declared all Knox County schools would be closed. Schools are familiar to the public, are fenced for security, have adequate space and provide required copiers, computers, electronic equipment, etc. The Superintendent of Knox County Schools has signed an agreement to provide administrative personnel, food service personnel, custodians, security, and teachers to help us meet this requirement.

The points of dispensing plan calls for the selected locations to be open for 2 days, 24 hours a day (two shifts) and can be expanded to be operational for up to 10 consecutive days, 16 hours a day, ( two shifts).

In order to transport the population of Knox County to the 8 points of dispensing sites, staging areas have been pre-designated within the county.

Staging areas are referred to as Collection Points, where residents will be asked to report and be transported to a Point of Dispensing Site.

Collection Points are pre-identified to be at the following locations:

- First Baptist Church of Concord, 11704 Kingston Pike
- West Town Mall, 7600 Kingston Pike
- Pellissippi State Technical Community College, 10915 Hardin Valley Road
- Powell High School, 2136 Emory Road
- Juvenile Service Center, 3321 Division Street
- John Tarleton Park, Division Street
- University of Tennessee, 523 Andy Holt Drive
- South Doyle High School, 2020 Tipton Station Road
- Sevier Heights Baptist Church, 3232 Alcoa Highway
- Knoxville Coliseum, 500 Howard Baker, Jr. Avenue
- Knoxville Center Mall, 3001 Knoxville Center Drive
- Carter High School, 210 Carter School Road
- Fulton High School, 2509 Broadway
- Gibbs High School, 7628 Tazewell Pike
- Beaver Dam Baptist Church, 4328 East Emory Road
- Wallace Memorial Baptist Church, 701 Merchants Road.

A representative has visited these staging areas from the Knox County Health Department, or Knox County employee and all are willing to assist in any way possible.

### **C. Operation Condition Levels**

The Knox County Health Department has adopted four operation condition levels

To classify the operations of the health department in relation to the estimated

Impact of an emergency event.

- Operation Condition Level Normal
- Operation Condition Level 1
- Operation Condition Level 2

- **Operation Condition Level 3**

As intelligence and information is gathered, a determination by the Knox County Health Department Director or Public Health Officer is made regarding the operation condition the Knox County Health Department should be functioning under to ensure necessary and appropriate response capability. As the situation is better understood, the level may be modified.

**Operation Condition Normal**

Normal operations consist of those daily functions that the Knox County Health Department must carry out, in the absence of an emergency situation. Preparation for readiness to respond is essential. Plans and exercises should be accomplished to increase capabilities to effectively respond to a public emergency. Equipment should be checked in order to ensure the Knox County Health Department is functionally prepared to be activated, should the need arise.

**Operation Condition level 1**

Level 1 is a monitoring phase triggered by the potential for an event that could threaten life, property, or the environment. KEMA will alert agencies that would need to prepare to take action and continue everyday activities. Higher security measures may be implemented. The Knox County Health Department Director, or Public Health Officer, or designee, as deemed necessary, may maintain key personnel on duty in order to maintain response capability and augmentation to the Knox County Health Department “KROC”, and KEMA-EOC, should they become operational.

## **Operation Condition Level 2**

Level 2 indicates a partial activation (initial activation phase) of the Knox County Health Department “KROC”. It is triggered by highly probable hazardous conditions and strong potential for loss of life or property damage. All “community partners” have been notified and advised of the situation, with the KEMA-EOC, staffed with EMA personnel.

## **Operation Condition Level 3**

Level 3 indicates a full activation of the Knox County Health Department “KROC”. It is triggered by extremely hazardous conditions that are imminent or occurring. The KEMA-EOC is fully activated with all appropriate agencies present.

## **IV Investigation and Preparedness Activities**

### **A. Investigation**

Investigation activities are those, which eliminate or reduce the probability of an event like this occurring, or lessen the destructive or damaging effects if it occurs. This is accomplished with sufficient surveillance measures and/or prompt notification to initiate the emergency response plan and will strengthen the Knox County Health Department’s ability to protect the public.

### **B. Preparedness**

Preparedness activities serve to develop the response capabilities that may be needed if an implementation of the mass clinic plan is requested.

Planning and training are among the activities conducted for such events. Other examples include the development of warning and communication systems, conducting exercises, and the development of mutual-aid agreements.

## **V. Response and Recovery Actions**

### **A. Response**

Response is the process of providing the mass vaccination/dispensing program to the citizens of Knox County. This program will help prevent or stop the spread of some bioterrorism agents and lessen casualties if a case of smallpox, biological or chemical event, or outbreak is detected.

The central point of coordination for all local emergency operations will be the KEMA-EOC. This is to ensure harmonious response when an emergency arises that involves more than one agency or political entity.

In order to successfully work this event, KEMA-EOC will open, and will follow the normal notification process: Depending on the magnitude, this will include notification of not only local, but also state, and federal agencies, to include the Tennessee Emergency Management Agency.

TEMA would coordinate all state agencies from Nashville, and the Field Command Centers.

The Knox County Health Department will be responsible for notifying key “community partners” from every agency involved in planning this event.

Even though there may be dual notification, it is important that these individuals be alerted. For Knox County Health Department personnel,

pre-determined assignments have been established, as well as some County government management staff.

**A. Knoxville Emergency Management Agency**

1. The activation and operation of the Emergency Operation Center.
2. Keep appropriate government officials updated of the situation.
3. Notify appropriate local, state, and federal agencies.
4. Maintain information flow between agencies represented.
5. Coordinate any assistance requested by the County Health Department with the overall operation.

**B. Emergency Medical Services**

1. Provide medical personnel for the (8) points of dispensing or develop a response plan for vaccination sites or staging areas, if requested.

**C. Knox County School System**

1. Provide concessions to volunteers at the points of dispensing sites and identified staging areas.
2. Provide administrative staffing for points of dispensing sites, which could include principals, assistant principals, or other designated staff during operational hours.
3. Provide maintenance staff to assist with the cleanliness of the site, and initiate set-up of each site or staging areas, and assist with storage of biohazard waste.

4. Assist in the transporting of supplies from the Knox County Health Department, and/or SNS warehouse to points of dispensing sites using school maintenance vans, and personnel.
5. Provide through already established contracts, school buses to assist in the transporting of the population from staging areas to vaccination points.
6. Ensure school management is available for consultation during the event.
7. Designate school personnel to serve as team leaders, and assistant team leaders to work with clinic managers from the Knox County Health Department.
8. Provide administrative offices as a command center, as well as the use of telephones, and fax machines.

**D. City/County Attorney**

1. Provide legal/technical advice to the County/City Mayors, County Health Department director, and/or public health officers during The event.

**E. Medical Examiner**

1. Arrange for removal/disposal of victims.

**F. County Mayor**

1. Head the direction/control group in the County Emergency Management Agency-Emergency Operation Center during this event, to include the County Finance Director, or his/her designee.

**G. Knox County Sheriff’s Department**

1. Provide security at the points of dispensing sites.
2. Provide security at staging areas outside the city.
3. Provide transport of vaccine to and from points of dispensing sites, if requested.
4. Provide management personnel at the Emergency Operation Center.

**H. City of Knoxville, Police Department**

1. Provide security at the points of dispensing sites within the city.
2. Provide security at staging areas within the city.
3. Provide the transport of vaccine to and from the vaccination sites, if requested.
4. Provide management personnel at the Emergency Operation Center.

**I. County/City Maintenance Department**

1. Provide traffic control devices for points of dispensing sites and staging areas, if requested.
2. Provide manpower and vehicles, if requested.
3. Assist in securing additional contacts for traffic control devices.

**J. Tennessee State Guard**

1. Assist with security at points of dispensing sites or staging areas.

**K. County/City Reserve Law Enforcement**

1. Provide security at points of dispensing sites, staging areas, and Knox County Health Department.

**L. County/City Parks & Recreation**

1. Provide personnel and vehicles for points of dispensing sites and staging areas.

**M. Knox Area Transit Authority**

1. Provide transportation to points of dispensing sites and return to staging areas.

**N. Knox County School Bus Association**

1. Provide transportation to points of dispensing sites and return to staging areas.

**VI. Maintenance and/or Training**

In order to maintain up-to-date testing of resources and personnel, the Knox County Health Department will update personnel, both volunteer and governmental, every year, as well as schedule and conduct required exercises through the Tennessee Department of Health. Other exercises will be scheduled in conjunction with the Knoxville Emergency Management Agency and the State Office of Homeland Security

The Knox County Health Department is committed to retraining County employees on a yearly basis to ensure personnel will be able to do the assigned tasks, when called upon. County employees will then be tasked to provide Just-In-Time training to volunteers assisting in the response.

