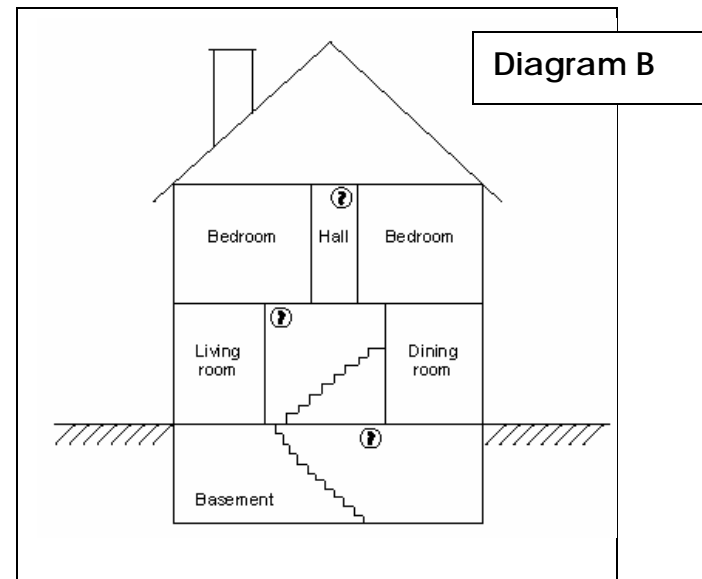
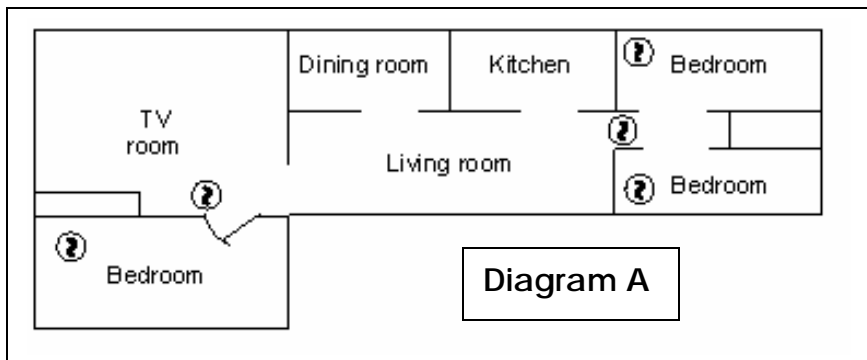




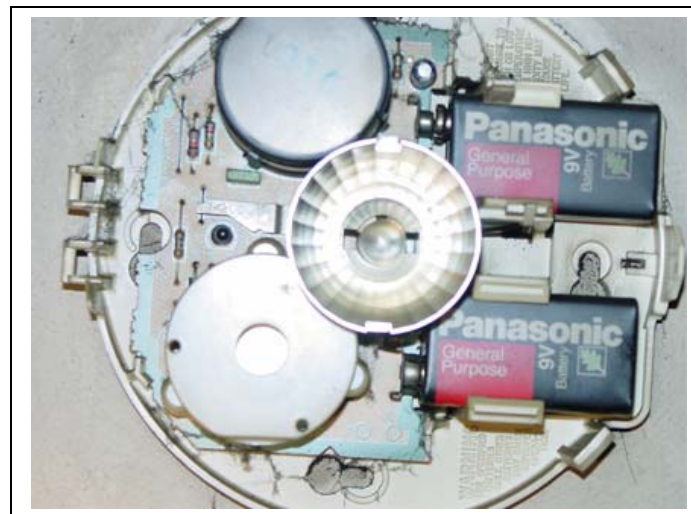
Rev. 11-1-2006

Knox County Fire Prevention Bureau Household Battery Powered Smoke Detectors

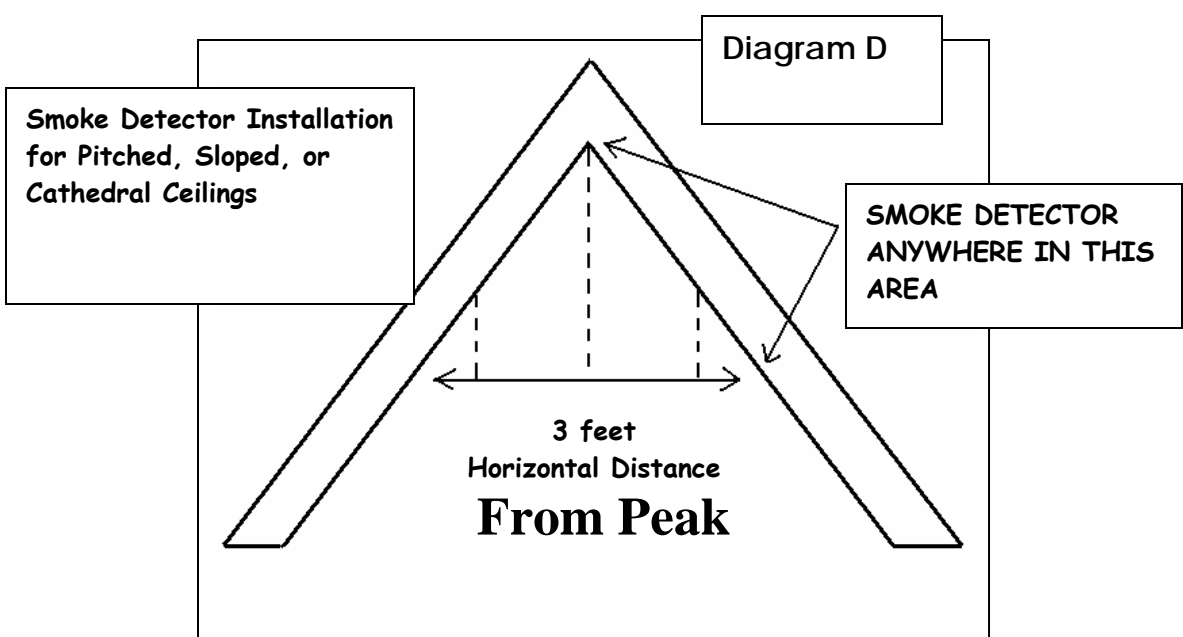


Installation Guides

- Detectors should be located in and outside of all sleeping areas (Diagram A).
- Detectors should be located on all levels of your home (Diagram B).
- When mounting a detector on the ceiling, locate it at a minimum of 4" from the side wall (See Diagram C).
- When mounting a detector on a wall, the top edge of the detector must be a minimum of 4" and a maximum of 12" from the ceiling (See Diagram C)
- Install detectors on a sloped, pitched, or cathedral ceilings at or within 3' of the highest of the peak (See Diagram D)



Batteries disconnected from detector contacts



Installation Locations to Avoid

- In dusty areas (attic, crawl spaces, etc.).
- Near kitchens.
- Near wood burning fire places.
- Within 3' of HVAC supply or return ducts.
- Within 3' of a door to a bathroom containing a tub or shower.

This handout is intended as a guide. It is by no means all-inclusive or has all code related section listed. If you have questions regarding this information please contact the Knox Co. Fire Prevention Bureau at 215-4660

Maintenance and Testing

- Test the detector by pressing the test button weekly.
- “Change your clock, change your battery” The battery should be changed at least twice a year. It is recommended that they be changed when you change your clock in the spring and in the fall.
- The detector should be cleaned at least annually. To clean the interior of the detector, remove it from the mounting bracket and use compressed air to blow it out. The exterior can be wiped off with a damp cloth.
- Detector should be replaced every 10 years or as recommended by the manufacturer.

