



Monthly Financial Update

For the Month Ended April 30, 2018

Prepared by: Knox County Finance Dept.

Knox County Commission

TABLE OF CONTENTS

Summary Schedule – Operating Funds for Budget Report to the Citizenry.....1

General Fund – Sales Tax Analysis.....2

General Purpose School Fund – Sales Tax Analysis.....3

Engineering & Public Works Fund – Sales Tax Analysis.....4

General Fund – Property Tax Trend Analysis.....5

General Purpose School Fund – Property Tax Trend Analysis.....6

Debt Service – Property Tax Trend Analysis.....7

Hotel/Motel Fund.....8

Wheel Tax Report.....9

Chancery/Probate Courts.....10

Criminal/Sessions Court.....11

Circuit/Civil Sessions and Juvenile Court Clerk.....12

KNOX COUNTY, TENNESSEE

**Summary Schedule - Operating Funds
for the Budget Report to the Citizenry
For ten months ended April 30, 2018 and 2017**

	2017-2018			2016-2017			Year to Date Increase (Decrease)
	Annual Budget	Year to Date Actual	% of Annual Budget	Annual Budget	Year to Date Actual	% of Annual Budget	
Revenues and Operating Transfers In:							
General Fund	\$ 179,693,126	\$ 155,664,037	86.63%	\$ 172,937,402	\$ 149,480,198	86.44%	\$ 6,183,839
Governmental Library Fund	107,892	47,713	44.22%	110,000	49,209	44.74%	(1,496)
Public Library Fund	13,403,900	9,489,562	70.80%	13,277,474	9,523,866	71.73%	(34,304)
Solid Waste Fund	4,054,563	2,004,503	49.44%	3,954,563	1,963,161	49.64%	41,342
Hotel/Motel Fund	8,000,000	5,210,718	65.13%	7,200,000	5,223,573	72.55%	(12,855)
Engineering and Public Works Fund	15,882,946	10,977,446	69.11%	14,713,162	9,840,951	66.89%	1,136,495
Debt Service Fund	70,695,882	68,603,218	97.04%	68,379,836	54,023,574	79.01%	14,579,644
General Purpose School Fund	471,685,000	398,627,597	84.51%	453,515,000	383,567,522	84.58%	15,060,075
Total Revenues and Operating Transfers In	\$ 763,523,309	\$ 650,624,794	85.21%	\$ 734,087,437	\$ 613,672,054	83.60%	\$ 36,952,740
Expenditures and Operating Transfers Out:							
General Fund	\$ 184,767,178	\$ 143,773,296	77.81%	\$ 179,707,410	\$ 142,798,153	79.46%	\$ 975,143
Governmental Library Fund	107,892	87,046	80.68%	110,109	76,583	69.55%	10,463
Public Library Fund	13,754,539	10,776,427	78.35%	13,613,731	10,939,712	80.36%	(163,285)
Solid Waste Fund	4,201,772	3,594,113	85.54%	4,069,606	3,162,888	77.72%	431,225
Hotel/Motel Fund	8,650,000	5,399,650	62.42%	8,378,429	5,262,525	62.81%	137,125
Engineering and Public Works Fund	16,840,577	10,037,958	59.61%	15,668,258	12,337,303	78.74%	(2,299,345)
Debt Service Fund	75,500,000	18,752,766	24.84%	74,500,000	37,677,078	50.57%	(18,924,312)
General Purpose School Fund	472,485,268	354,781,817	75.09%	453,911,526	324,317,926	71.45%	30,463,891
Total Expenditures and Operating Transfers Out	\$ 776,307,226	\$ 547,203,073	70.49%	\$ 749,959,069	\$ 536,572,168	71.55%	\$ 10,630,905

GENERAL FUND - SALES TAX ANALYSIS FY 2017-2018

Current Year Amounts				
Month Received	402100	402105	402110	Total
September (July)	\$689,938.76	\$0.00	\$914.43	\$690,853.19
October (August)	755,117.33	0.00	914.43	756,031.76
November (Sept)	644,741.53	0.00	914.43	645,655.96
December (Oct)	565,132.49	0.00	914.43	566,046.92
January (Nov)	617,044.72	0.00	914.43	617,959.15
February (Dec)	865,567.25	0.00	914.43	866,481.68
March (Jan)	661,300.77	0.00	914.43	662,215.20
April (Feb)	636,534.02	0.00	914.43	637,448.45
May (March)	803,936.35	0.00	914.43	804,850.78
June (April)		0.00		0.00
July (May)		0.00		0.00
August (June)		0.00		0.00
Total	\$6,239,313.22	\$0.00	\$8,229.87	\$6,247,543.09

Current Projections:

6,247,543.09 Actual Collections
 73.90% **weighted avg trend**
8,454,050.19 FY18 Projected

8,454,050.19 FY18 Projected
 7,400,000.00 Budgeted revenue for FY18
1,054,050.19 Surplus (Deficit)

6,247,543.09 Actual Collections
 72.86% **prior year trend**
8,574,722.88 FY18 Projected

8,574,722.88 FY18 Projected
 7,400,000.00 Budgeted revenue for FY18
1,174,722.88 Surplus (Deficit)

6,247,543.09 Actual Collections
 73.47% **17-year avg trend**
8,503,529.45 FY18 Projected

8,503,529.45 FY18 Projected
 7,400,000.00 Budgeted revenue for FY18
1,103,529.45 Surplus (Deficit)

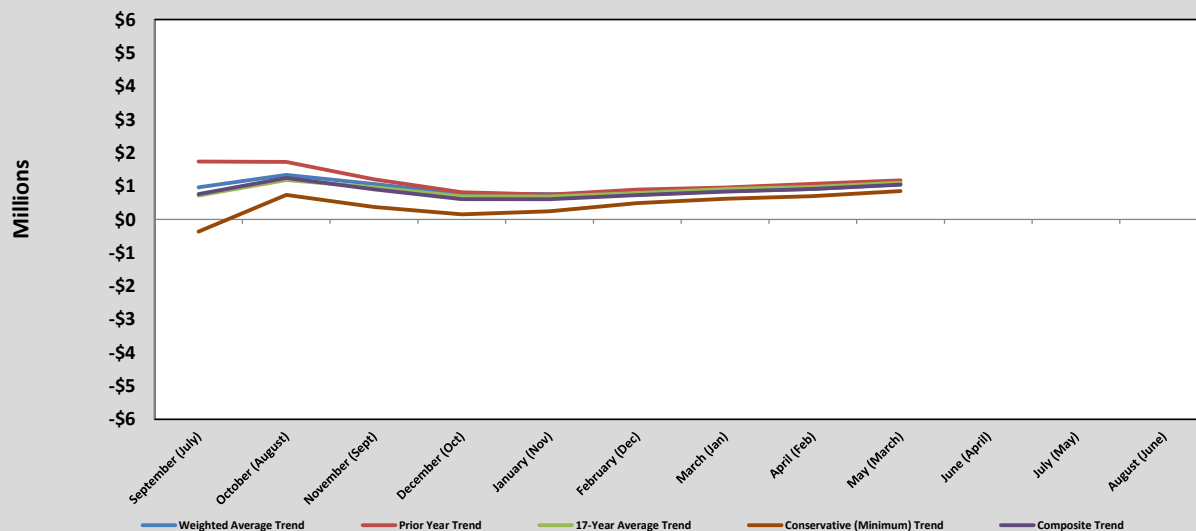
6,247,543.09 Actual Collections
 75.72% **Conservative trend**
8,250,849.30 FY18 Projected

8,250,849.30 FY18 Projected
 7,400,000.00 Budgeted revenue for FY18
850,849.30 Surplus (Deficit)

8,445,787.96 **Composite Projection**
 7,400,000.00 Budgeted Revenue for FY18
1,045,787.96 **Composite Surplus (Deficit)**

Projected Surplus (Deficit) as of Fiscal Year End Based on					
Date Collected	Weighted Average Trend	Prior Year Trend	17-Year Average Trend	Conservative (Minimum) Trend	Composite Trend
September (July)	963,840.07	1,738,269.71	718,133.84	(364,835.13)	763,852.12
October (August)	1,337,227.96	1,728,611.67	1,181,761.27	737,710.63	1,246,327.88
November (Sept)	1,061,548.36	1,204,197.82	966,816.91	376,071.76	902,158.71
December (Oct)	770,214.60	818,200.40	690,650.73	154,952.63	608,504.59
January (Nov)	760,764.58	744,536.37	688,242.36	242,983.39	609,131.68
February (Dec)	737,946.69	894,351.67	792,660.98	492,986.59	729,486.48
March (Jan)	855,014.36	955,492.71	912,132.61	619,432.34	835,518.01
April (Feb)	915,801.85	1,069,798.18	975,950.00	698,039.44	914,897.37
May (March)	1,054,050.19	1,174,722.88	1,103,529.45	850,849.30	1,045,787.96
June (April)					
July (May)					
August (June)					

SALES TAX PROJECTIONS AS OF FISCAL YEAR END 2017-2018



GENERAL PURPOSE SCHOOL FUND - SALES TAX ANALYSIS FY 2017-2018

Current Year Amounts				
Month Received	402100	402105	402110	Total
September (July)	\$10,733,759.67	\$0.00	\$4,099.14	\$10,737,858.81
October (August)	12,448,827.15	0.00	4,099.14	\$12,452,926.29
November (Sept)	12,601,791.01	0.00	4,099.14	\$12,605,890.15
December (Oct)	12,201,888.20	0.00	4,099.14	\$12,205,987.34
January (Nov)	12,743,893.38	0.00	4,099.14	\$12,747,992.52
February (Dec)	16,232,894.26	0.00	4,099.14	\$16,236,993.40
March (Jan)	11,472,932.18	0.00	4,099.14	\$11,477,031.32
April (Feb)	11,238,340.16	0.00	4,099.14	\$11,242,439.30
May (March)	13,365,735.91	0.00	4,099.14	\$13,369,835.05
June (April)				\$0.00
July (May)				\$0.00
August (June)				\$0.00
Total	\$113,040,061.92	\$0.00	\$36,892.26	\$113,076,954.18

Current Projections:

113,076,954.18	Actual Collections
74.71%	weighted avg trend
<u>151,354,509.68</u>	FY18 Projected
151,354,509.68	FY18 Projected
148,370,000.00	Budgeted revenue for FY18
<u>2,984,509.68</u>	Surplus (Deficit)

113,076,954.18	Actual Collections
74.44%	prior year trend
<u>151,903,484.93</u>	FY18 Projected
151,903,484.93	FY18 Projected
148,370,000.00	Budgeted revenue for FY18
<u>3,533,484.93</u>	Surplus (Deficit)

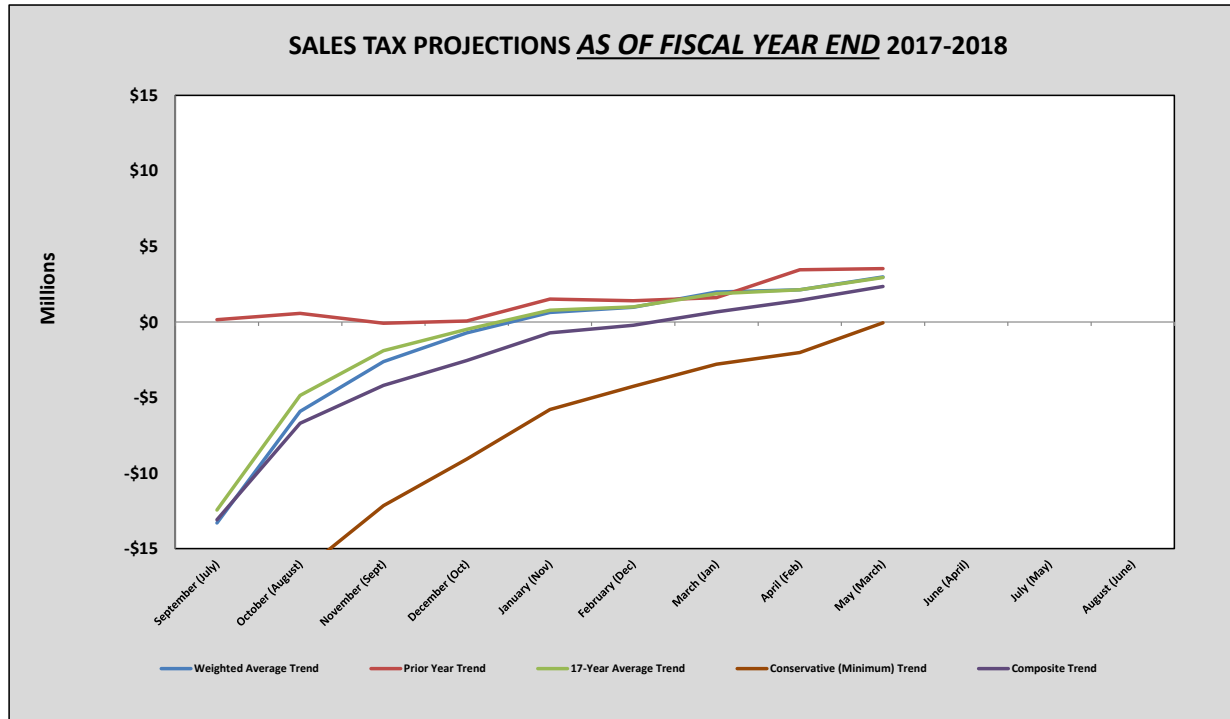
113,076,954.18	Actual Collections
74.73%	17-year avg trend
<u>151,314,002.65</u>	FY18 Projected
151,314,002.65	FY18 Projected
148,370,000.00	Budgeted revenue for FY18
<u>2,944,002.65</u>	Surplus (Deficit)

113,076,954.18	Actual Collections
76.24%	Conservative trend
<u>148,317,096.25</u>	FY18 Projected
148,317,096.25	FY18 Projected
148,370,000.00	Budgeted revenue for FY18
<u>(52,903.75)</u>	Surplus (Deficit)

150,722,273.38	Composite Projection
148,370,000.00	Budgeted Revenue for FY18
<u>2,352,273.38</u>	Composite Surplus (Deficit)

Projected Surplus (Deficit) as of Fiscal Year End Based on					
Date Collected	Weighted Average Trend	Prior Year Trend	17-Year Average Trend	Conservative (Minimum) Trend	Composite Trend
September (July)	(13,302,593.58)	148,102.49	(12,447,736.58)	(26,763,444.96)	(13,091,418.16)
October (August)	(5,920,460.07)	575,312.14	(4,862,666.46)	(16,604,175.57)	(6,702,997.49)
November (Sept)	(2,618,064.94)	(82,198.63)	(1,902,425.33)	(12,157,384.89)	(4,190,018.45)
December (Oct)	(714,932.05)	61,238.68	(487,490.48)	(9,070,340.71)	(2,552,881.14)
January (Nov)	638,229.36	1,520,587.49	784,566.93	(5,796,296.39)	(713,228.15)
February (Dec)	975,583.92	1,411,417.33	1,004,560.55	(4,252,350.22)	(215,197.10)
March (Jan)	1,977,858.31	1,620,979.70	1,875,719.82	(2,797,053.10)	669,376.18
April (Feb)	2,131,311.89	3,460,545.35	2,131,311.89	(2,021,667.21)	1,425,375.48
May (March)	2,984,509.68	3,533,484.93	2,944,002.65	(52,903.75)	2,352,273.38
June (April)					
July (May)					
August (June)					

SALES TAX PROJECTIONS AS OF FISCAL YEAR END 2017-2018



ENGINEERING & PUBLIC WORKS FUND - SALES TAX ANALYSIS FY 2017-2018

Current Year Amounts				
Month Received	402100	402105	402110	Total
September (July)	\$499,610.83	\$0.00	\$662.17	\$500,273.00
October (August)	546,809.10	0.00	662.17	\$547,471.27
November (Sept)	466,881.80	0.00	662.17	\$467,543.97
December (Oct)	409,233.87	0.00	662.17	\$409,896.04
January (Nov)	446,825.49	0.00	662.17	\$447,487.66
February (Dec)	626,790.09	0.00	662.17	\$627,452.26
March (Jan)	478,872.97	0.00	662.17	\$479,535.14
April (Feb)	460,938.43	0.00	662.17	\$461,600.60
May (March)	582,160.81	0.00	662.17	\$582,822.98
June (April)				\$0.00
July (May)				\$0.00
August (June)				\$0.00
Total	\$4,518,123.39	\$0.00	\$5,959.53	\$4,524,082.92

Current Projections:

4,524,082.92	Actual Collections
73.91%	weighted avg trend
<u>6,121,070.11</u>	FY18 Projected
6,121,070.11	FY18 Projected
5,200,000.00	Budgeted revenue for FY18
<u>921,070.11</u>	Surplus (Deficit)

4,524,082.92	Actual Collections
72.90%	prior year trend
<u>6,205,875.06</u>	FY18 Projected
6,205,875.06	FY18 Projected
5,200,000.00	Budgeted revenue for FY18
<u>1,005,875.06</u>	Surplus (Deficit)

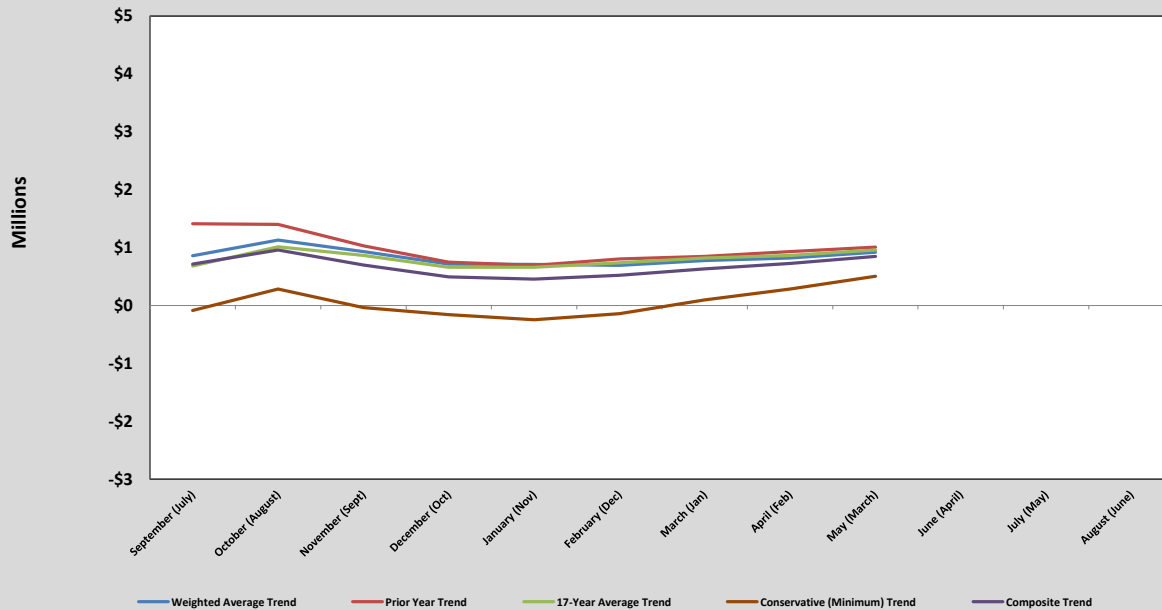
4,524,082.92	Actual Collections
73.47%	17-year avg trend
<u>6,157,728.22</u>	FY18 Projected
6,157,728.22	FY18 Projected
5,200,000.00	Budgeted revenue for FY18
<u>957,728.22</u>	Surplus (Deficit)

4,524,082.92	Actual Collections
79.33%	Conservative trend
<u>5,702,865.15</u>	FY18 Projected
5,702,865.15	FY18 Projected
5,200,000.00	Budgeted revenue for FY18
<u>502,865.15</u>	Surplus (Deficit)

6,046,884.63	Composite Projection
5,200,000.00	Budgeted Revenue for FY18
<u>846,884.63</u>	Composite Surplus (Deficit)

Projected Surplus (Deficit) as of Fiscal Year End Based on					
Date Collected	Weighted Average Trend	Prior Year Trend	17-Year Average Trend	Conservative (Minimum) Trend	Composite Trend
September (July)	856,573.85	1,408,626.16	678,648.65	(89,959.14)	713,472.38
October (August)	1,126,958.15	1,402,043.29	1,014,378.83	285,572.09	957,238.09
November (Sept)	927,328.10	1,030,625.99	861,152.96	(38,936.51)	695,042.63
December (Oct)	714,544.64	745,596.91	658,747.05	(157,610.58)	490,319.50
January (Nov)	708,047.66	693,372.93	657,003.06	(248,681.26)	452,435.60
February (Dec)	694,153.63	802,649.46	733,789.95	(142,474.38)	522,029.67
March (Jan)	776,742.25	845,273.35	819,130.50	93,062.58	633,552.17
April (Feb)	819,947.98	928,533.57	865,343.09	282,347.95	724,043.15
May (March)	921,070.11	1,005,875.06	957,728.22	502,865.15	846,884.63
June (April)					
July (May)					
August (June)					

SALES TAX PROJECTIONS AS OF FISCAL YEAR END 2017-2018



GENERAL FUND - 101 (PROPERTY TAX TREND ANALYSIS)

Month Received	FY 07		FY 08		FY09		FY10		FY11		FY12	
	Amount	Cumulative % Collected	Amount	Cumulative % Collected	Amount	Cumulative % Collected	Amount	Cumulative % Collected	Amount	Cumulative % Collected	Amount	Cumulative % Collected
September	220,163.25	0.23%	112,595.01	0.12%	100,157.26	0.11%	\$156,497.04	0.17%	\$719,297.48	0.76%	\$592,898.61	0.61%
October	9,271,616.17	9.89%	8,462,091.61	9.44%	7,627,409.75	8.46%	7,268,441.50	7.97%	7,845,112.35	9.02%	8,391,386.29	9.31%
November	6,179,493.75	16.33%	8,715,143.12	19.04%	4,188,560.26	13.04%	5,205,049.45	13.56%	4,752,549.81	14.03%	4,938,267.41	14.43%
December	33,519,618.24	51.26%	28,703,573.80	50.66%	29,713,823.72	45.57%	34,987,350.43	51.11%	35,203,148.44	51.12%	36,428,000.86	52.17%
January	7,622,518.83	59.21%	7,343,473.60	58.75%	12,025,356.26	58.73%	6,878,666.13	58.49%	8,197,783.62	59.76%	7,304,379.65	59.74%
February	26,390,943.01	86.71%	26,920,102.96	88.40%	28,853,246.19	90.31%	24,863,419.63	85.18%	27,389,296.46	88.62%	30,201,562.97	91.04%
March	9,588,570.46	96.70%	7,738,626.23	96.92%	6,091,195.70	96.98%	10,950,519.64	96.93%	8,356,471.04	97.43%	6,157,626.52	97.42%
April	1,319,606.29	98.08%	1,082,442.75	98.11%	1,001,743.36	98.08%	1,328,327.31	98.36%	825,439.78	98.30%	906,056.21	98.35%
May	829,942.78	98.94%	812,330.80	99.01%	498,786.10	98.62%	536,567.05	98.94%	483,386.77	98.80%	692,714.80	99.07%
June	405,932.93	99.36%	388,168.89	99.44%	487,919.00	99.16%	439,732.86	99.41%	414,590.19	99.24%	410,344.03	99.50%
July	299,841.33	99.68%	296,864.48	99.76%	495,970.71	99.70%	346,586.20	99.78%	439,204.19	99.70%	250,773.74	99.76%
August	310,253.04	100.00%	214,215.54	100.00%	275,109.35	100.00%	204,446.59	100.00%	280,912.93	100.00%	234,162.85	100.00%
Actual	<u>95,958,500.08</u>		<u>90,789,628.79</u>		<u>91,359,277.66</u>		<u>93,165,603.83</u>		<u>94,907,193.06</u>		<u>96,508,173.94</u>	
Budgeted	0.00		0.00		0.00		0.00		94,575,000.00		95,836,000.00	
Surplus (Deficit)	95,958,500.08		90,789,628.79		91,359,277.66		93,165,603.83		332,193.06		672,173.94	
			-5.39%		0.63%		1.98%		1.87%		1.69%	

Month Received	FY 13		FY 14		FY 15		FY 16		FY 17		FY 18	
	Amount	Cumulative % Collected	Amount	Cumulative % Collected	Amount	Cumulative % Collected	Amount	Cumulative % Collected	Amount	Cumulative % Collected	Amount	Cumulative % Collected
September	560,617.70	0.57%	503,528.04	0.50%	519,702.34	0.51%	574,535.90	0.54%	700,112.06	0.65%	750,884.15	0.69%
October	9,251,790.68	9.92%	9,544,179.40	10.00%	10,345,795.20	10.57%	10,904,347.47	10.85%	11,528,679.69	11.42%	13,153,171.10	12.84%
November	6,448,933.15	16.44%	7,346,766.48	17.32%	5,148,624.24	15.58%	6,407,027.15	16.91%	12,481,252.99	23.07%	6,914,184.42	19.22%
December	35,010,559.36	51.84%	35,589,713.41	52.75%	35,110,180.67	49.75%	37,533,751.93	52.40%	32,064,012.91	53.00%	39,026,263.66	55.25%
January	8,008,964.48	59.93%	6,339,569.33	59.06%	9,865,043.15	59.35%	7,492,581.76	59.48%	9,365,042.63	61.74%	8,997,947.25	63.55%
February	33,992,137.79	94.30%	37,430,644.06	96.32%	36,840,316.14	95.20%	37,968,132.11	95.38%	37,003,124.79	96.29%	36,692,441.44	97.43%
March	3,482,949.97	97.82%	1,558,179.97	97.87%	2,323,352.23	97.46%	2,848,582.11	98.07%	2,354,826.01	98.48%	1,995,581.40	99.27%
April	933,131.29	98.76%	1,027,646.37	98.89%	970,679.84	98.41%	876,808.71	98.90%	566,111.90	99.01%	790,054.00	100.00%
May	523,825.96	99.29%	389,820.48	99.28%	617,241.74	99.01%	431,089.50	99.31%	379,267.01	99.37%		100.00%
June	274,360.67	99.57%	319,922.92	99.60%	349,409.84	99.35%	309,250.99	99.60%	272,246.95	99.62%		100.00%
July	210,543.33	99.78%	237,570.02	99.84%	389,035.79	99.72%	216,131.49	99.81%	258,574.23	99.86%		100.00%
August	214,364.05	100.00%	163,120.83	100.00%	283,273.79	100.00%	205,825.54	100.00%	147,921.99	100.00%		100.00%
Actual	<u>98,912,178.43</u>		<u>100,450,661.31</u>		<u>102,762,654.97</u>		<u>105,768,064.66</u>		<u>107,121,173.16</u>		<u>108,320,527.42</u>	
Budgeted	97,873,000.00		99,910,000.00		102,720,000.00		104,954,000.00		107,088,000.00		109,804,000.00	
Surplus (Deficit)	1,039,178.43		540,661.31		42,654.97		814,064.66		33,173.16		(1,483,472.58)	
	2.49%		1.56%		2.30%		2.92%		1.28%			

GENERAL PURPOSE SCHOOLS FUND - 141 (PROPERTY TAX TREND ANALYSIS)

Month Received	FY 07		FY 08		FY09		FY10		FY11		FY12	
	Amount	Cumulative % Collected	Amount	Cumulative % Collected	Amount	Cumulative % Collected	Amount	Cumulative % Collected	Amount	Cumulative % Collected	Amount	Cumulative % Collected
September	218,387.49	0.23%	122,559.52	0.12%	111,993.99	0.11%	\$174,244.07	0.17%	\$800,866.99	0.76%	\$660,134.32	0.61%
October	9,196,834.53	9.89%	9,210,975.66	9.44%	8,528,828.18	8.46%	8,092,694.66	7.97%	8,734,760.92	9.02%	9,342,983.21	9.31%
November	6,129,652.09	16.33%	9,486,421.89	19.04%	4,683,570.43	13.04%	5,795,310.57	13.56%	5,291,496.73	14.03%	5,498,275.01	14.43%
December	33,249,260.62	51.26%	31,243,802.57	50.66%	33,225,446.87	45.57%	38,964,973.18	51.12%	39,195,243.05	51.12%	40,558,995.72	52.17%
January	7,561,038.23	59.21%	7,993,361.42	58.75%	13,446,530.45	58.73%	7,658,718.11	58.50%	9,127,425.69	59.76%	8,132,708.25	59.74%
February	26,178,082.81	86.71%	29,302,496.89	88.40%	32,263,165.03	90.31%	27,682,972.08	85.18%	30,495,287.48	88.62%	33,626,469.65	91.04%
March	9,511,232.37	96.70%	8,423,484.53	96.92%	6,811,062.12	96.98%	12,192,326.47	96.94%	9,304,108.54	97.43%	6,855,911.46	97.42%
April	1,308,962.80	98.08%	1,178,237.52	98.11%	1,120,130.85	98.08%	1,478,961.79	98.36%	919,046.00	98.30%	1,008,804.48	98.35%
May	823,248.74	98.94%	884,221.01	99.01%	557,733.37	98.62%	597,414.63	98.94%	538,203.63	98.80%	771,269.82	99.07%
June	402,658.81	99.36%	422,521.33	99.44%	545,581.99	99.16%	489,599.28	99.41%	461,605.38	99.24%	456,877.73	99.50%
July	297,422.91	99.68%	323,136.60	99.76%	554,585.25	99.70%	385,889.64	99.78%	489,010.66	99.70%	279,211.88	99.76%
August	307,750.64	100.00%	233,173.33	100.00%	307,622.18	100.00%	227,631.17	100.00%	312,768.92	100.00%	260,717.27	100.00%
Actual	95,184,532.04		98,824,392.27		102,156,250.71		103,740,735.65		105,669,823.99		107,452,358.80	
<i>Budgeted</i>	<i>0.00</i>		<i>0.00</i>		<i>0.00</i>		<i>0.00</i>		<i>108,000,000.00</i>		<i>106,704,000.00</i>	
Surplus (Deficit)	95,184,532.04		98,824,392.27		102,156,250.71		103,740,735.65		(2,330,176.01)		748,358.80	
			3.82%		3.37%		1.55%		1.86%		1.69%	

Month Received	FY 13		FY 14		FY 15		FY 16		FY 17		FY 18	
	Amount	Cumulative % Collected	Amount	Cumulative % Collected	Amount	Cumulative % Collected	Amount	Cumulative % Collected	Amount	Cumulative % Collected	Amount	Cumulative % Collected
September	624,192.64	0.57%	560,628.95	0.50%	476,393.50	0.51%	521,227.28	0.54%	635,151.77	0.65%	674,950.08	0.69%
October	10,300,958.82	9.92%	10,626,504.95	10.00%	9,483,639.33	10.57%	9,892,581.83	10.85%	10,458,985.06	11.42%	11,823,040.66	12.84%
November	7,180,252.71	16.44%	8,179,901.83	17.32%	4,719,569.12	15.58%	5,812,547.75	16.91%	11,323,173.36	23.07%	6,214,979.08	19.22%
December	38,980,814.05	51.84%	39,625,645.10	52.75%	32,184,311.01	49.75%	34,051,163.00	52.40%	29,088,936.55	53.00%	35,079,685.20	55.25%
January	8,917,194.15	59.93%	7,058,486.86	59.06%	9,042,950.26	59.35%	6,797,378.64	59.48%	8,496,102.20	61.74%	8,088,018.88	63.55%
February	37,846,901.81	94.30%	41,675,340.30	96.32%	33,770,267.54	95.20%	34,445,238.94	95.38%	33,569,770.37	96.29%	32,981,873.59	97.43%
March	3,877,922.17	97.82%	1,734,880.05	97.87%	2,129,738.14	97.46%	2,584,274.92	98.07%	2,136,332.23	98.48%	1,793,775.78	99.27%
April	1,038,949.89	98.76%	1,144,183.13	98.89%	889,789.25	98.41%	795,763.40	98.90%	513,584.91	99.01%	710,158.83	100.00%
May	583,228.68	99.29%	434,026.74	99.28%	565,804.53	99.01%	391,090.63	99.31%	344,076.51	99.37%		100.00%
June	305,473.62	99.57%	356,202.70	99.60%	320,292.15	99.35%	280,556.97	99.60%	246,986.37	99.62%		100.00%
July	234,419.27	99.78%	264,510.85	99.84%	356,615.93	99.72%	196,077.62	99.81%	234,582.31	99.86%		100.00%
August	238,673.27	100.00%	181,619.01	100.00%	259,667.44	100.00%	186,727.92	100.00%	134,196.97	100.00%		100.00%
Actual	110,128,981.08		111,841,930.47		94,199,038.20		95,954,628.90		97,181,878.61		97,366,482.10	
<i>Budgeted</i>	<i>108,972,000.00</i>		<i>111,240,000.00</i>		<i>94,160,000.00</i>		<i>95,216,000.00</i>		<i>97,152,000.00</i>		<i>99,616,000.00</i>	
Surplus (Deficit)	1,156,981.08		601,930.47		39,038.20		738,628.90		29,878.61		(2,249,517.90)	
	2.49%		1.56%		-15.77%		1.86%		1.28%			

DEBT SERVICE - 151 (PROPERTY TAX TREND ANALYSIS)

Month Received	FY 07		FY 08		FY09		FY10		FY11		FY12	
	Amount	Cumulative % Collected	Amount	Cumulative % Collected	Amount	Cumulative % Collected	Amount	Cumulative % Collected	Amount	Cumulative % Collected	Amount	Cumulative % Collected
September	39,061.00	0.23%	32,881.60	0.12%	32,778.73	0.11%	\$50,014.54	0.17%	\$229,878.67	0.76%	\$189,483.14	0.61%
October	1,644,954.75	9.89%	2,471,220.67	9.44%	2,496,242.85	8.46%	2,322,904.90	7.97%	2,507,201.84	9.02%	2,681,784.30	9.31%
November	1,096,355.52	16.33%	2,545,120.38	19.04%	1,370,801.35	13.04%	1,663,470.07	13.56%	1,518,856.72	14.03%	1,578,209.79	14.43%
December	5,946,995.03	51.26%	8,382,426.95	50.66%	9,724,522.81	45.57%	11,181,528.75	51.11%	11,250,495.15	51.12%	11,641,943.00	52.17%
January	1,352,374.64	59.21%	2,144,545.88	58.75%	3,935,570.61	58.73%	2,198,337.46	58.49%	2,619,911.26	59.76%	2,334,390.29	59.74%
February	4,682,237.30	86.71%	7,861,592.36	88.40%	9,442,879.29	90.31%	7,946,044.44	85.18%	8,753,283.75	88.62%	9,652,049.72	91.04%
March	1,701,188.26	96.70%	2,259,943.99	96.92%	1,993,481.96	96.98%	3,499,651.98	96.93%	2,670,625.80	97.43%	1,967,902.02	97.42%
April	234,122.36	98.08%	316,110.37	98.11%	327,843.24	98.08%	424,517.14	98.36%	263,800.46	98.30%	289,564.49	98.35%
May	147,247.07	98.94%	237,228.42	99.01%	163,239.06	98.62%	171,480.26	98.94%	154,484.50	98.80%	221,383.16	99.07%
June	72,019.95	99.36%	113,358.61	99.44%	159,682.56	99.16%	140,533.24	99.41%	132,497.94	99.24%	131,140.93	99.50%
July	53,197.35	99.68%	86,694.60	99.76%	162,317.66	99.70%	110,764.70	99.78%	140,364.29	99.70%	80,144.20	99.76%
August	55,044.58	100.00%	62,558.28	100.00%	90,035.77	100.00%	65,338.63	100.00%	89,776.32	100.00%	74,835.58	100.00%
Actual	<u>17,024,797.81</u>		<u>26,513,682.11</u>		<u>29,899,395.89</u>		<u>29,774,586.11</u>		<u>30,331,176.70</u>		<u>30,842,830.62</u>	
Budgeted	0.00		0.00		0.00		0.00		30,225,000.00		30,628,000.00	
Surplus (Deficit)	17,024,797.81		26,513,682.11		29,899,395.89		29,774,586.11		106,176.70		214,830.62	
			55.74%		12.77%		-0.42%		1.87%		1.69%	

Month Received	FY 13		FY 14		FY 15		FY 16		FY 17		FY 18	
	Amount	Cumulative % Collected	Amount	Cumulative % Collected	Amount	Cumulative % Collected	Amount	Cumulative % Collected	Amount	Cumulative % Collected	Amount	Cumulative % Collected
September	179,166.53	0.57%	160,921.42	0.50%	259,851.81	0.51%	278,382.73	0.54%	339,228.75	0.65%	362,785.80	0.69%
October	2,956,759.03	9.92%	3,050,202.83	10.00%	5,172,910.12	10.57%	5,283,537.44	10.85%	5,586,048.21	11.42%	6,354,886.69	12.84%
November	2,061,000.07	16.44%	2,347,936.61	17.32%	2,574,318.34	15.58%	3,104,428.55	16.91%	6,047,603.27	23.07%	3,340,552.50	19.22%
December	11,188,946.04	51.84%	11,374,036.57	52.75%	17,555,132.75	49.75%	18,186,414.54	52.40%	15,536,134.84	53.00%	18,855,337.76	55.25%
January	2,559,566.98	59.93%	2,026,048.72	59.06%	4,932,533.49	59.35%	3,630,417.72	59.48%	4,537,690.43	61.74%	4,347,311.75	63.55%
February	10,863,470.98	94.30%	11,962,375.46	96.32%	18,420,202.57	95.20%	18,396,886.90	95.38%	17,929,307.15	96.29%	17,727,763.57	97.43%
March	1,113,108.15	97.82%	497,975.22	97.87%	1,161,678.95	97.46%	1,380,237.59	98.07%	1,140,995.49	98.48%	964,154.83	99.27%
April	298,217.32	98.76%	328,423.16	98.89%	485,341.07	98.41%	424,844.49	98.90%	274,301.01	99.01%	381,710.50	100.00%
May	167,408.37	99.29%	124,581.85	99.28%	308,621.62	99.01%	208,877.93	99.31%	183,768.12	99.37%		100.00%
June	87,682.29	99.57%	102,243.46	99.60%	174,705.34	99.35%	149,842.91	99.60%	131,913.14	99.62%		100.00%
July	67,287.07	99.78%	75,924.49	99.84%	194,518.33	99.72%	104,723.28	99.81%	125,288.28	99.86%		100.00%
August	68,508.00	100.00%	52,131.41	100.00%	141,637.20	100.00%	99,729.66	100.00%	71,673.39	100.00%		100.00%
Actual	<u>31,611,120.83</u>		<u>32,102,801.20</u>		<u>51,381,451.59</u>		<u>51,248,323.74</u>		<u>51,903,952.08</u>		<u>52,334,503.40</u>	
Budgeted	31,279,000.00		31,930,000.00		51,360,000.00		50,854,000.00		51,888,000.00		53,204,000.00	
Surplus (Deficit)	332,120.83		172,801.20		21,451.59		394,323.74		15,952.08		(869,496.60)	
	2.49%		1.56%		60.05%		-0.26%		1.28%			

HOTEL/MOTEL FUND - HOTEL/MOTEL TAX ANALYSIS FY 2017-2018

Current Year Amounts				
Month Received	401100	Total		
September (July)	\$713,911.09	\$0.00	\$0.00	\$713,911.09
October (August)	709,210.26	0.00	0.00	709,210.26
November (Sept)	769,228.05	0.00	0.00	769,228.05
December (Oct)	758,602.46	0.00	0.00	758,602.46
January (Nov)	729,400.18	0.00	0.00	729,400.18
February (Dec)	504,045.27	0.00	0.00	504,045.27
March (Jan)	539,445.22	0.00	0.00	539,445.22
April (Feb)	486,874.80	0.00	0.00	486,874.80
May (March)	689,499.59	0.00	0.00	689,499.59
June (April)	0.00	0.00	0.00	0.00
July (May)	0.00	0.00	0.00	0.00
August (June)	0.00	0.00	0.00	0.00
Total	\$5,900,216.92	\$0.00	\$0.00	\$5,900,216.92

Current Projections:

5,900,216.92	Actual Collections
72.55%	weighted avg trend
8,132,621.53	FY18 Projected
8,132,621.53	FY18 Projected
8,000,000.00	Budgeted revenue for FY18
132,621.53	Surplus (Deficit)

5,900,216.92	Actual Collections
73.66%	prior year trend
8,010,069.13	FY18 Projected
8,010,069.13	FY18 Projected
8,000,000.00	Budgeted revenue for FY18
10,069.13	Surplus (Deficit)

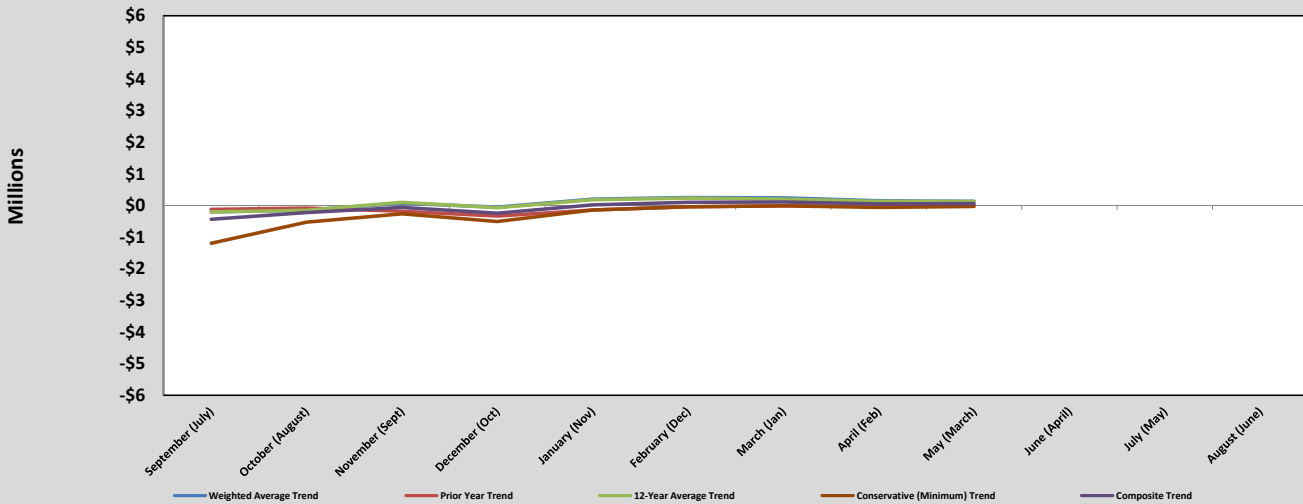
5,900,216.92	Actual Collections
72.58%	12-year avg trend
8,129,260.02	FY18 Projected
8,129,260.02	FY18 Projected
8,000,000.00	Budgeted revenue for FY18
129,260.02	Surplus (Deficit)

5,900,216.92	Actual Collections
74.05%	Conservative trend
7,967,882.40	FY18 Projected
7,967,882.40	FY18 Projected
8,000,000.00	Budgeted revenue for FY18
(32,117.60)	Surplus (Deficit)

8,059,958.27	Composite Projection
8,000,000.00	Budgeted Revenue for FY18
59,958.27	Composite Surplus (Deficit)

Projected Surplus (Deficit) as of Fiscal Year End Based on					
Date Collected	Weighted Average Trend	Prior Year Trend	12-Year Average Trend	Conservative (Minimum) Trend	Composite Trend
September (July)	(206,210.81)	(128,874.42)	(206,210.81)	(1,200,846.76)	(435,535.70)
October (August)	(141,792.66)	(84,975.81)	(150,461.39)	(525,623.16)	(225,713.25)
November (Sept)	71,978.65	(181,350.21)	101,808.57	(264,116.44)	(67,919.86)
December (Oct)	(54,518.42)	(341,157.90)	(71,596.29)	(506,470.60)	(243,435.81)
January (Nov)	194,949.99	(144,392.66)	176,743.03	(144,392.66)	20,726.93
February (Dec)	253,249.13	(46,384.13)	225,668.00	(46,384.13)	96,537.22
March (Jan)	235,429.79	(9,738.62)	201,115.50	(9,738.62)	104,267.02
April (Feb)	149,385.88	(25,226.00)	127,776.21	(62,882.97)	47,263.28
May (March)	132,621.53	10,069.13	129,260.02	(32,117.60)	59,958.27
June (April)					
July (May)					
August (June)					

Hotel/Motel Tax Projections *As Of Fiscal Year End 2017-2018*



Wheel Tax Report

	General Fund	GP Schools	Public Library	Monthly Total	Cumulative Total	% of Total Per Month	Variance by Monthly Total
FY'2016							
<i>Budget</i>	13,075,000.00						
July	51,955.23	156,122.28	1,074,767.82	1,282,845.33	1,282,845.33	9.75%	
August	41,137.51	123,615.67	850,987.77	1,015,740.95	2,298,586.28	7.72%	
September	46,650.40	140,181.57	965,029.73	1,151,861.70	3,450,447.98	8.76%	
October	44,296.88	133,109.40	916,343.92	1,093,750.20	4,544,198.18	8.32%	
November	34,398.27	103,364.66	711,576.97	849,339.90	5,393,538.08	6.46%	
December	42,038.65	126,323.55	869,629.18	1,037,991.38	6,431,529.46	7.89%	
January	31,337.10	94,166.05	648,252.37	773,755.52	7,205,284.98	5.88%	
February	46,458.42	139,604.69	961,058.38	1,147,121.49	8,352,406.47	8.72%	
March	49,889.05	149,913.52	1,032,025.85	1,231,828.42	9,584,234.89	9.37%	
April	47,408.28	142,458.95	980,707.57	1,170,574.80	10,754,809.69	8.90%	
May	49,171.68	147,757.88	1,017,186.12	1,214,115.68	11,968,925.37	9.23%	
June	47,957.14	144,108.26	992,061.63	1,184,127.03	13,153,052.40	9.00%	
FY'2017							
<i>Budget</i>	13,100,000.00						
July	45,942.84	138,055.41	950,392.95	1,134,391.20	1,134,391.20	8.37%	(148,454.13)
August	53,397.65	160,456.64	1,104,606.17	1,318,460.46	2,452,851.66	9.72%	302,719.51
September	46,656.86	140,200.99	965,163.45	1,152,021.30	3,604,872.96	8.50%	159.60
October	46,442.29	139,556.21	960,724.65	1,146,723.15	4,751,596.11	8.46%	52,972.95
November	34,825.30	104,647.88	720,410.77	859,883.95	5,611,480.06	6.34%	10,544.05
December	43,155.02	129,678.18	892,722.90	1,065,556.10	6,677,036.16	7.86%	27,564.72
January	39,768.66	119,502.38	822,671.28	981,942.32	7,658,978.48	7.24%	208,186.80
February	43,674.51	131,239.21	903,469.28	1,078,383.00	8,737,361.48	7.95%	(68,738.49)
March	55,405.89	166,491.27	1,146,149.39	1,368,046.55	10,105,408.03	10.09%	136,218.13
April	44,040.84	132,340.02	911,047.38	1,087,428.24	11,192,836.27	8.02%	(83,146.56)
May	44,416.31	133,468.27	918,814.42	1,096,699.00	12,289,535.27	8.09%	(117,416.68)
June	51,423.40	154,524.13	1,063,765.95	1,269,713.48	13,559,248.75	9.36%	85,586.45
FY'2018							
<i>Budget</i>	13,170,000.00						
July	47,511.85	142,770.19	982,850.16	1,173,132.20	1,173,132.20		38,741.00
August	51,071.95	153,468.04	1,056,495.71	1,261,035.70	2,434,167.90		(57,424.76)
September	45,708.15	137,350.16	945,537.89	1,128,596.20	3,562,764.10		(23,425.10)
October	46,032.26	138,324.10	952,242.64	1,136,599.00	4,699,363.10		(10,124.15)
November	40,488.28	121,664.79	837,557.58	999,710.65	5,699,073.75		139,826.70
December	41,973.38	126,127.41	868,278.91	1,036,379.70	6,735,453.45		(29,176.40)
January	39,552.45	118,852.68	818,198.67	976,603.80	7,712,057.25		(5,338.52)
February	45,411.66	136,459.23	939,404.61	1,121,275.50	8,833,332.75		42,892.50
March	48,012.07	144,273.30	993,197.78	1,185,483.15	10,018,815.90		(182,563.40)
April	49,922.47	150,013.93	1,032,717.10	1,232,653.50	11,251,469.40		145,225.26
May							
June							

Howard G. Hogan
Chancery/Probate Courts

	<u>FY18</u>	<u>FY17</u>	<u>Difference</u>
July	38,022.98	51,257.86	(13,234.88)
August	46,172.30	31,904.88	14,267.42
September	61,231.66	41,953.18	19,278.48
October	25,293.23	69,287.36	(43,994.13)
November	18,925.68	42,060.08	(23,134.40)
December	29,206.31	19,779.65	9,426.66
January	28,919.79	20,954.17	7,965.62
February	38,614.24	39,442.78	(828.54)
March	51,555.58	26,952.07	24,603.51
April	47,523.90	21,901.27	25,622.63
May			-
June			-
	<u>385,465.67</u>	<u>365,493.30</u>	<u>19,972.37</u>

MIKE HAMMOND
Criminal/Sessions Court

	<u>FY2018</u>	<u>FY2017</u>	<u>Difference</u>
July	245,410.01	220,451.12	24,958.89
August	234,858.90	272,384.25	(37,525.35)
September	239,007.71	269,293.77	(30,286.06)
October	247,848.15	242,628.99	5,219.16
November	251,413.92	246,583.76	4,830.16
December	239,113.19	199,277.76	39,835.43
January	284,322.12	274,694.56	9,627.56
February	294,375.31	324,169.23	(29,793.92)
March	269,457.78	344,179.56	(74,721.78)
April	283,663.54	273,191.71	10,471.83
May			-
June			-
	<u>2,589,470.63</u>	<u>2,666,854.71</u>	<u>(77,384.08)</u>

Catherine F. Shanks
Knox County Circuit, Civil Sessions and Juvenile Court Clerk

	<u>FY18</u>	<u>FY17</u>	<u>Difference</u>
July	196,564.99	198,650.30	(2,085.31)
August	272,918.80	240,532.72	32,386.08
September	171,612.91	208,888.34	(37,275.43)
October	184,961.37	188,818.91	(3,857.54)
November	188,733.49	177,527.77	11,205.72
December	159,881.44	213,187.38	(53,305.94)
January	225,820.81	197,506.90	28,313.91
February	205,035.22	194,453.71	10,581.51
March	216,981.49	253,732.50	(36,751.01)
April	207,894.12	180,010.29	27,883.83
May			-
June			-
	<u>2,030,404.64</u>	<u>2,053,308.82</u>	<u>(22,904.18)</u>